

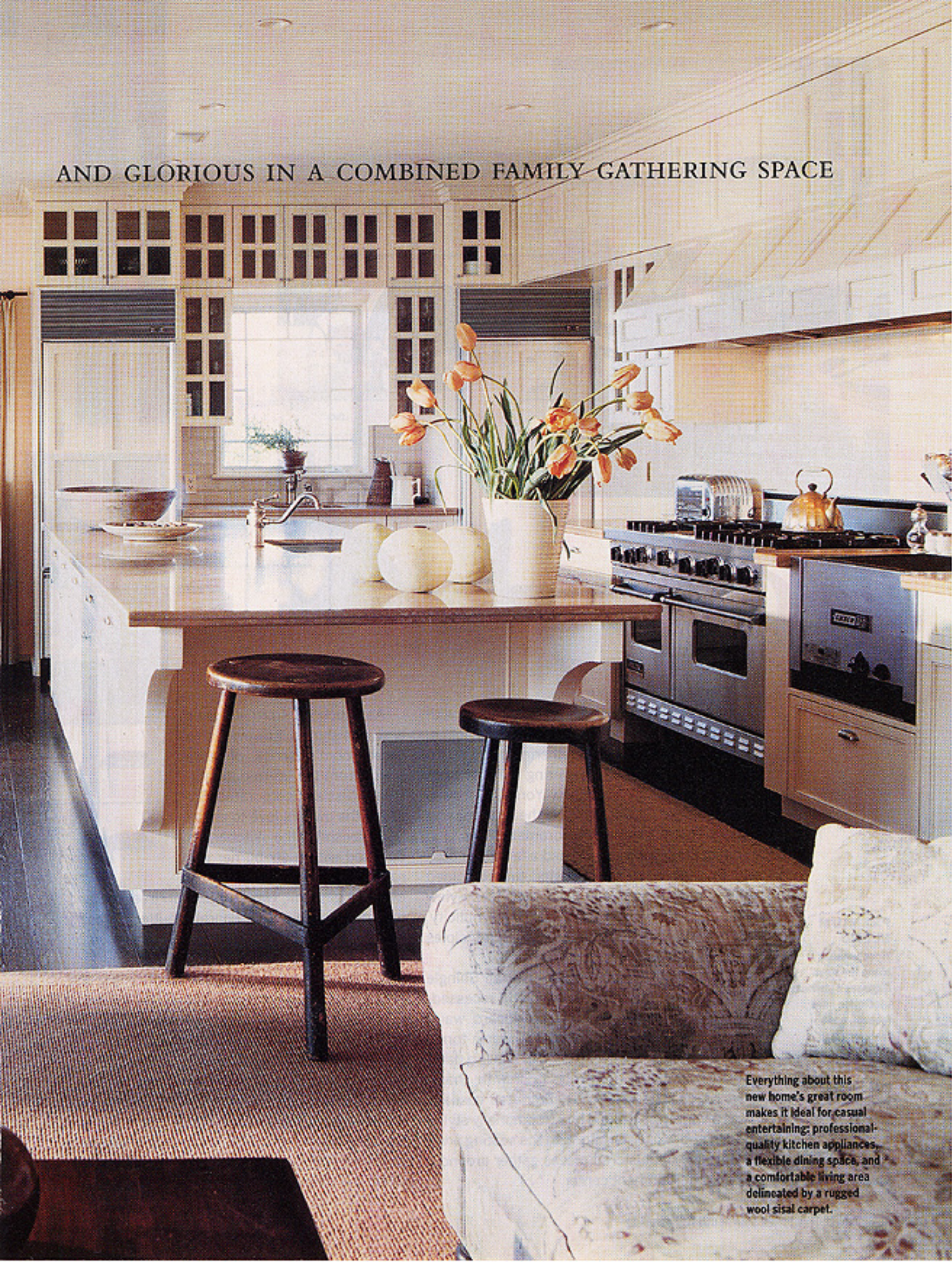
open season

WARM AND WELCOMING WINS OUT OVER GRAND



WRITTEN BY NORMAN KOLPAS
PHOTOGRAPHY BY PIETER ESTERSON
PRODUCED BY SARAH SPENCER

AND GLORIOUS IN A COMBINED FAMILY GATHERING SPACE



Everything about this new home's great room makes it ideal for casual entertaining: professional-quality kitchen appliances, a flexible dining space, and a comfortable living area delineated by a rugged wool sisal carpet.



g

reat" is not synonymous with "grand," when it comes to a great room kitchen. Forget the image of a vast gathering place with a cathedral ceiling and a towering window wall: Such an approach, says New York City-based designer Glenn Gissler, "misses the boat, making a great room far too melodramatic." He and architect Francis Fleetwood had a far cozier concept in mind when they created the combined cooking and living space for a new ocean-view home on eastern Long Island. Simplicity, warmth, and ease became the guiding principles for the 22½ x 32½-foot area.

In harmony with the house's overall Shingle style, Gissler fitted the room with recessed-panel custom cabinetry and beadboard wainscoting and ceiling, all painted a warm-toned white. Enhancing the impression of age is a dark-stained wide-plank hardwood floor with chamfered edges. The adjacent dining area casually mixes a variety of antique and traditionally styled wooden and wicker furniture. In the seating area, comfortably upholstered pieces gather around a built-in entertainment center.

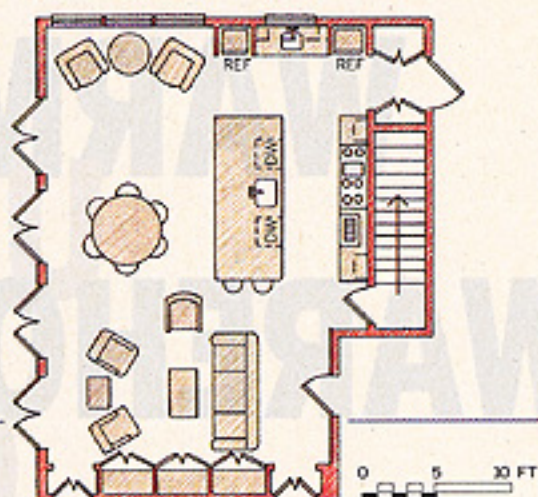
As much as from its style and furnishings, however, this great room's sense of ease stems from the up-to-date efficiency Gissler incorporated. Because the owners love to entertain lavishly, the kitchen is outfitted with a six-burner gas range with griddle and double ovens, a gas grill, two refrigerator/freezers, and two dishwashers. A separate butler's pantry houses the microwave and icemaker. Generous storage includes cabinets about the prep sink that climb all the way to the 9½-foot ceiling and others that open on both sides of the 4½ x 11-foot island—not to mention a walk-in pantry in the basement, reached by stairs just behind the stove wall. Yet the unobtrusive décor and relatively modest proportions subtly downplay all these hardworking features. "When people walk into this great room," says Gissler, "you can see their shoulders relax. They sit down and sigh and say, 'Man, oh man.'" Which, he adds, is just the effect the ultimate great room should achieve.

PREMIUM BLEND

Wood paneling above the stove disguises a stainless ventilation hood (above), and crackle-glazed subway tiles with chamfered edges gleam on the backsplash. Designer Glenn Gissler (above right) surveys his handiwork from the island's sink side.



THE GREAT ROOM
KITCHEN FEELS AS
RELAXED AND
EXPANSIVE AS THE
SEASIDE VIEWS
OUTSIDE ITS WINDOWS



OUT IN THE OPEN

While the elements of this great room share an open space and are easily accessible, Glenn Gissler's design efficiently separates the functions.

- The cooking zone is tucked into one corner and set apart by an island that helps distract the eye from kitchen clutter.
- The dining area aligns with a stretch of island counter that doubles as a buffet.
- A wool sisal carpet subtly delineates and softens the living area; its furniture is grouped about the built-in entertainment center at one end of the room, allowing family and guests to lounge or chat with their hosts as they cook.



VIEW THROUGH

Glass-front cabinets frame a mullioned window (above) with views of dunes and ocean; a prep sink is mounted beneath the limestone counter. Near the refrigerators (left), a doorway leads to the butler's pantry and the front hall. Six antique chairs seat diners at the new, traditionally styled dining table (right).